

Office Space with Optional Training Room / Warehouse

1135 Corporate Drive, Holland, OH 43528

Listing ID: 29688958
Status: Active
Property Type: Office For Lease
Office Type: Business Park, Office Building
Contiguous Space: 3,000 SF
Total Available: 3,000 SF
Lease Rate: \$1,950 (Monthly)
Unit Price: \$7.80 PSF (Annual)
Base Monthly Rent: \$1,950
Lease Type: Gross Lease



Overview/Comments

BROKER PROTECTED

Office suite in Springfield Township.

Available Immediately! Newly renovated suite with a modern layout and nice amenities. Large conference room with wet bar.

Separate Utilities with Efficient Heating and Cooling systems.

- Adjoining 3,400 Square foot office, training room and a small warehouse may also be available.

Tucked in behind a very nice Retail area with Kohls, Gander Mountain and several other National Tenants.

Extremely accessible from I-475 and SR 23. Within Minutes of Dana, The Andersons, Owens Illinois and Arrowhead Park.

Landlord Pays for Land Tax, Parking Lot Maintenance and Lawn Care.

More Information Online

<http://www.catylist.com/listing/29688958>



QR Code

Scan this image with your mobile device:

General Information

Office Type: Business Park, Office Building

Available Space

Suite/Unit Number:	1135	Lease Rate:	\$1,950 (Monthly)
Space Available:	3,000 SF	Lease Type:	Gross Lease
Minimum Divisible:	3,000 SF	Kitchen/Breakroom:	Yes
Maximum Contiguous:	3,000 SF	Parking Spaces:	0
Space Type:	New	Rent Escalators:	Fixed Lease
Date Available:	04/01/2016		

Area & Location

Market Type:	Medium	Airports:	45 Minutes from Detroit Metro (DTW) and 15 minutes from Toledo Express (TOL)
Side of Street:	East	Site Description:	Professional Business Park. Designated Parking, Location for Large Sign.
Road Type:	Paved		
Property Visibility:	Excellent		

Highway Access Exit Airport Hwy on I 475 and US 23. Go east, Turn North on Holland Sylvania, Turn Left onto Trust Drive which turns into Corporate Drive. Located next to the Honeybaked Ham facility.

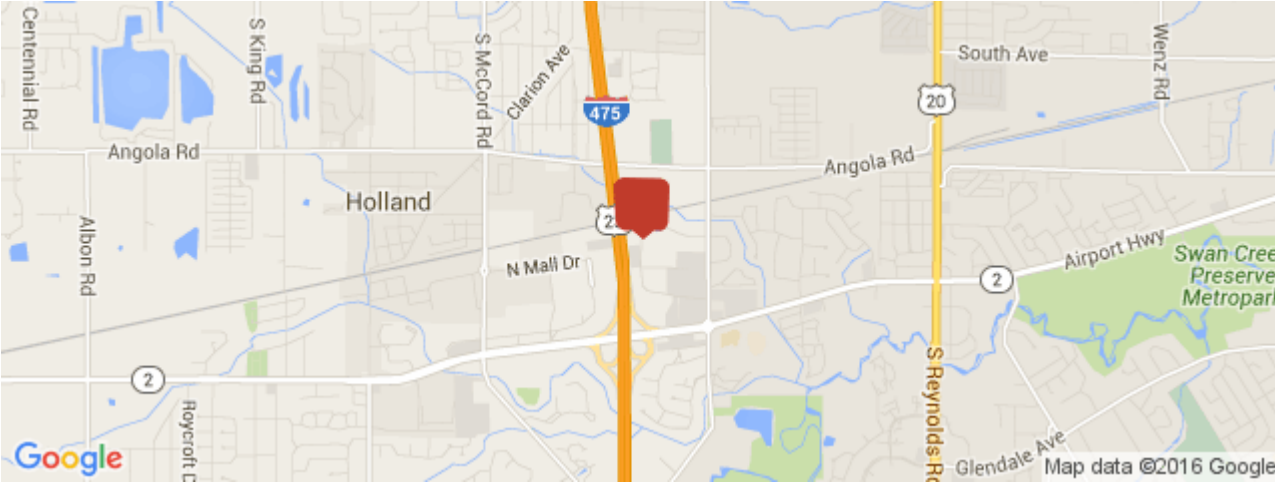
Building Related

Year Built:	1988	Roof Type:	Flat
Year Renovated:	2005	Construction/Siding:	Block

Exterior Description:	White / Charcoal	Air Conditioning:	Package Unit
Parking Type:	Surface	Internet Access:	Cable, DSL
Heat Source:	Central	Interior Description:	TI Money available for upgrade to your standards.

Location

Address: 1135 Corporate Drive, Holland, OH 43528
County: Lucas
MSA: Toledo



Property Images



IMG_9663



IMG_9660



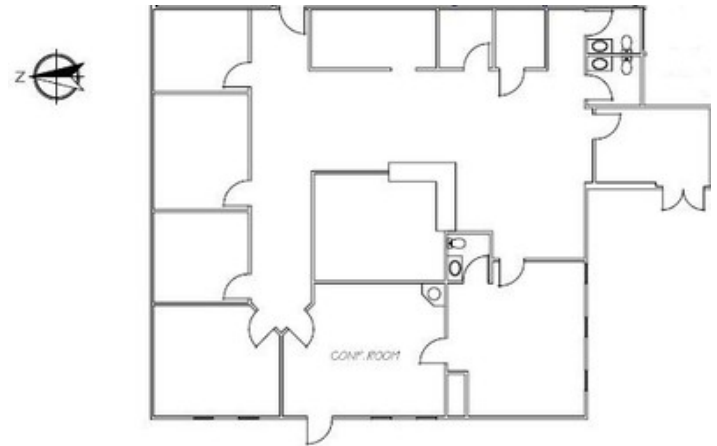
DSC00413



DSC00411



DSC00410



1135_Corporate_Drive_Floor_Plan

Property Contacts



Scott Mirtes
MIRTES, LTD
419-572-0610 [0]
scott.mirtes@gmail.com